



St Peters
Lutheran College

St Peters BYOT

Program Overview | Years 5 & 6

2025

Introduction

St Peters Lutheran College follows a BYOT (Bring Your Own Technology) model, with different types of devices specified as appropriate to their age. In 2025, all students in Year 5 and Year 6 will be required to bring an iPad to the College each day. If parents already have an iPad available that meets the minimum specifications listed below, this device can be used to meet the needs of the program. The iPad's compact design, portability, long battery life, ease of use and functionality make it an ideal choice for this age group allowing technology to be embedded in the everyday life of our students who are learning in an information-rich world. In some situations, technology access may be supplemented by the College.

Selecting and purchasing the iPad and Accessories

It is intended that an iPad should provide a minimum of 2 years of use. Purchasing beyond the minimum specifications may allow for a longer use period and provide extended compatibility with system updates. Students may also find the iPad useful as a supplementary device into their Secondary schooling.

Minimum Specifications for 2025

iPad Requirements:

1. Screen size - at least 9.7 inch (not an iPad Mini)
2. Production date - 2022 or newer
3. Models - The iPad, iPad Air or iPad Pro
4. iOS17.5 or later
5. Storage -64Gb as a minimum, but more storage is recommended to allow for photos and videos

Required iPad Accessories:

Your child will require headphones and a keyboard (preferably connected to iPad physically or via Bluetooth) that work with their iPad. This varies depending on your child's iPad model. They need to both connect at the same time. Further recommendations include:

- **iPad case** – a robust case with edge and impact protection and a screen cover
- **Headphones** – volume-restricted over ear headphones are ideal as they limit the volume to a safe level which can be used for an extended period
- **Keyboard** – Bluetooth or wired connection (via a Lightning or USB-C connector), may include a trackpad

Optional iPad Accessories:

- **Stylus / Apple Pencil** (compatible with relevant model)

Recommendations:

- Label or engrave equipment to ensure easy identification
- Investigate Accidental Damage Insurance (ADP) from the supplier
- Apple Care+ for iPad

Insurance

The College insurance policy does not cover BYOT and personal devices. We take no responsibility for accidental damage to, or loss of student property. It is essential for parents to make their own arrangements regarding insurance and cover for accidental damage, theft, or loss.

Apple ID (iTunes Accounts)

It is recommended that parents review Family Sharing and Apple ID information provided by Apple. Children under 13 cannot create an Apple ID on their own. However, a 'family organiser' can provide verified parental consent and create an Apple ID on the child's behalf in their family group. If your child has an Apple ID, you can [add it to your family group](#) and update their email address, date of birth, security questions, and more. Further details and instructions are available at www.support.apple.com.

Apps

Information regarding the initial set up of a student's iPad, including supported Apps, is provided through the **BYOT Information page**: <https://stpeters.fireflycloud.net.au/byot>.

New parents and students will receive an email detailing links to resources and how to set up your iPad ready for the academic year. Additional apps may be required throughout the year. Teachers will provide at least 24 hours' notice should an app be required for class to allow you sufficient time for the installation of the app on your child's iPad. In the case where you have Family Sharing set up, it is recommended that you approve app requests remotely for your child via a notification.

Parents are advised that some apps may require the students to set up an account. Apps such as Microsoft 365 are managed by the College and students will log in with their College email and password. Students will be supported with this at the commencement of their academic year and throughout the year as required.

Student Expectations

Students are expected to be ready to learn with their iPad by:

- Bringing their iPad charged and ready to use each day
- Taking care of the iPad and keeping it in its case/protective sleeve throughout the day to avoid physical damage
- Using their device as directed by teachers and within the appropriate areas and times as specified for Upper Primary students
- Managing their time, use and battery life of their iPad so that at the College it can be used productively for educational purposes
- Maintaining the currency of the software and apps to ensure the tools for their learning are ready
- Saving important files to their College OneDrive account and backing up to services such as iCloud or iTunes as required
- Securing their iPad in either the classroom or their locker when possible whilst at sport or during other activities which do not require the device, including at morning tea and lunch. Students are not permitted to use their iPads outside of class time unless with the permission from a teacher. Should students need to complete some class work, they can obtain a permission slip from their teacher which can be presented to the Upper Primary library staff at lunchtime
- Using the device responsibly, appropriately, and respectfully in accordance with the **Acceptable Use of Technology Agreement / [Acceptable Use of Technology Policy \(IND Parent\)](#)**
- Keeping passwords private and protecting their device so it requires a login when not in use
- Using College WiFi only, no personal hotspots
- Seeking permission before photographing, videoing, or sharing online
- At all times being mindful of both their digital reputation and that of the College

Consequences of misuse will be applied as deemed relevant to the behaviour and in accordance with Upper Primary behaviour management practices. These may include loss of Internet privileges, restricted device use or other disciplinary action.

Recommendations for Parents / Guardians

You are encouraged to consider the following to ensure the smart, safe, responsible use of the iPad at home:

- At home, the iPad and other devices should be used in an open area, where they can be visually monitored. Setting device-free zones and times is recommended, including no devices in bedrooms; device free meals; all screens off at least one hour before bedtime; device charging overnight in a location inaccessible to your child.
- Ensure a balance of screen time and off-screen time as appropriate for your child's age. Many authorities recommend that between the ages of 5-17 children have less than 2 hours of recreational screen time.
- Be involved and invite your child to regularly show you what they have been doing and the tools they have been using. Not only will this help you decide appropriateness, but also lead to conversations about your child's online use.
- Negotiate and agree upon boundaries for technology use. Respond with consequences if the device is not being used in an appropriate manner – some examples of consequences could be monitored use, restricted access or banning the use of the device at home for a period of time.
- Parents should consider implementing a content filtering system at their discretion. It is best to do this in conjunction with discussion, rather than secretly monitoring. Be open about the process and perhaps check your own use too ([Google Family Link](#) for Android and [Screen Time](#) for iPhone/iPad). Consider age-appropriate use of parental controls or restrictions including the Apple ID account and setting up restrictions for other safety aspects of the iPad. See the section below on managing restrictions for more information.
- Internet content filtering is enabled while students are using the College network.

Recommended iPad settings

Family Sharing

- Up to 6 accounts can be linked through Family Sharing options which can be used to track purchases and share content. Family Sharing makes it easy for family members to share Apps and other iTunes purchases without sharing accounts.
- One parent sets up as the Organiser and they can invite another parent/guardian to help administer.
- Once your child is added, setting their account to "ask to buy", will require parent approval for purchases.
- Go to Settings > [your name] > Set up Family Sharing.

For more information see <http://www.apple.com/au/icloud/family-sharing/>.

Screen Time

Restrictions can be set within the setting Screen Time. With Screen Time you can access reports on usage and time spent on your iPhone or iPad and set limits for what you want to manage. It is highly recommended that you review all sections in the Screen Time Settings of your child's iPad and set as appropriate for you and your child.

- Turn on Screen Time - Go to Settings > Screen Time.
- Tap Turn on Screen Time then Continue.
- Select either This Is My Device or This Is My Child's Device.

For your child's device, you can set up Screen Time and create settings directly on their device or you can use Family Sharing to configure your child's device from your own iPhone or iPad.

App Limits: Set daily time limits for specific apps or categories (Settings > Screen Time > App Limits)

Downtime: Schedule times when the device is unavailable (Settings > Screen Time > Downtime)

Content and Privacy Restrictions

Within Content and Privacy Restrictions, you can block or limit specific apps and features. Recommended settings include:

- **Restricting purchases** (Settings > Screen Time > Content and Privacy Restrictions > iTunes and App Store Purchases)
- **Content Restrictions** (Settings > Screen Time > Content and Privacy Restrictions > Store, Web, Siri and Game Center Content)
- **Prevent Siri from displaying explicit language** (Settings > Screen Time > Content and Privacy Restrictions > Store, Web, Siri and Game Center Content > Siri)
- **Restrict Game Centre** (Settings > Screen Time > Content and Privacy Restrictions > Store, Web, Siri and Game Center Content > Game Centre)
- **Prevent Web Content** (Settings > Screen Time > Content and Privacy Restrictions > Store, Web, Siri and Game Center Content > Web Content)

More information here: <https://support.apple.com/en-au/HT208982>

Messaging and Social Media

- Messages is a standard iPad App that is inbuilt into the iPad operating system and is enabled through the Apple ID linked to the device. This is not something that is set up at the College level. Apple IDs are maintained by parents. The Messages app can be used to send instant messages to your contacts. If your friends also use Apple devices, the iMessage feature allows you to send unlimited text messages, photos, videos, and more to these users.
- To support student wellbeing and minimise classroom distractions, the use of messaging apps (e.g. Whatsapp, FB Messenger, Instagram Messages) by Upper Primary students is not allowed whilst at the College. Parent contact with their child can be organised through Upper Primary Reception.
- To turn off iMessage, on the student's iPad, go to settings > messages > make sure iMessage is turned off / not logged in. Changes can be prevented by selecting Screen Time > Content and Privacy Restrictions and set Accounts to Don't Allow.
- The use of Social Media is not allowed in the Primary Years as most apps require a minimum age of 13. Parents are encouraged to review every app that their child requests, particularly thinking about privacy, safety and age restrictions.

Other Recommended Settings

- It is recommended that parents set that the Passcode is required immediately for each app purchase to reduce the risk of excessive purchases. To access this, go to Settings > Face ID and Passcode > Require Passcode Immediately.
- Also, in Touch ID and Passcode, it is recommended to disable Siri from a locked iPad – go to Allow Access When Locked and slide Siri to off.
- Payment information can also be removed from a device (Settings > iTunes and App Store > Apple ID > View Apple ID > Sign in with password > Payment Information > Change the payment option to none).
- The Focus option in the Settings > Focus assists in the reduction of distractions. It is recommended that students set up a 'College' focus option that is scheduled for their academic day and turn off notifications from apps that are not related to their College work.

Use of devices outside of class time

iPads - Students are not permitted to use their iPad while between classes.

Mobile Phones - The College understands the convenience and peace of mind associated with Upper Primary students being able to carry a mobile phone with them to and from the College.

Students who do bring a mobile phone to the College are required to:

- Year 5: Hand this into the Office or Class Teacher
- Year 6: Ensure that their mobile phone is locked in their lockers throughout the academic day

Technology and Wellbeing

The College uses the [eSmart schools](#) framework to ensure students, teachers and the wider College community are equipped to embrace the potential that technologies have for learning, contribute as responsible digital citizens and recognise and respond to online risks. St Peters students will engage with a range of learning activities designed to raise their cyber-safety awareness so they can stay smart, safe and responsible online.

The College filters access to the Internet, reducing the likelihood of students accidentally accessing undesirable sites. Use of the Internet via the College wireless network is logged whilst students are at the College. Parents are encouraged to monitor their child's use of their iPad and other devices whilst at home and to filter their home internet access.

The following Australian websites provide information and resources to assist in this endeavour:

- Tech and Wellbeing Firefly page stpeters.fireflycloud.net.au/tech-and-wellbeing (requires Firefly login)
- eSafety Commissioner www.esafety.gov.au
- Think u know organisation www.thinkuknow.org.au
- Common Sense Media advice for parents www.common sense media.org/advice-for-parents

Health and Safety When Using a Device

For good ergonomic practice, students are advised to consider the following when using their device:

- Take regular rest breaks within the confines of the classroom and as directed by your teacher;
- Avoid using the device for more than an hour without a rest break;
- Use the device on a desk rather than on the lap or floor whenever possible;
- Angle the screen to minimise the need to bend the neck. Use of a case/device with a stand and an external keyboard for tablets and iPads is recommended;
- Work in an environment free from glare and adjust the tilt of your screen to avoid reflections from lights or windows;
- Maintain good posture and avoid sitting for long periods of time;
- Increase font size for comfortable viewing;
- When using headphones keep your volume low or use volume-restricted (to 89dB) over-ear headphones.
- Keep screen brightness at a level that does not require eye strain; and
- Adjust your device settings for brightness depending on your location and the lighting where you are working.

Contacts

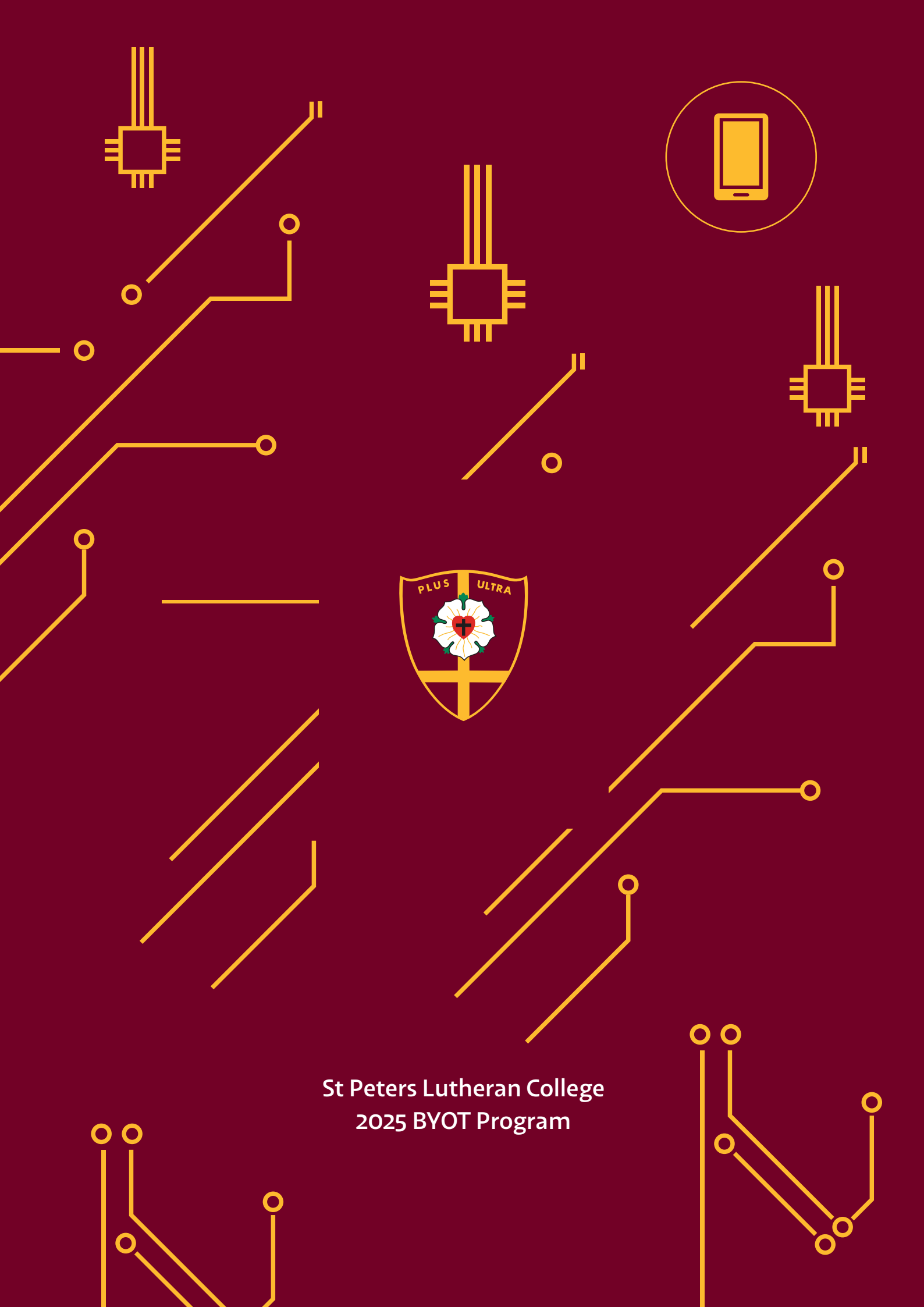
For queries regarding the BYOT program, please email byot@stpeters.qld.edu.au. More detailed information is available on the BYOT Information Page (<http://stpeters.fireflycloud.net.au/byot>).



Click to email a BYOT Query



Scan to view the BYOT Information Page



St Peters Lutheran College
2025 BYOT Program